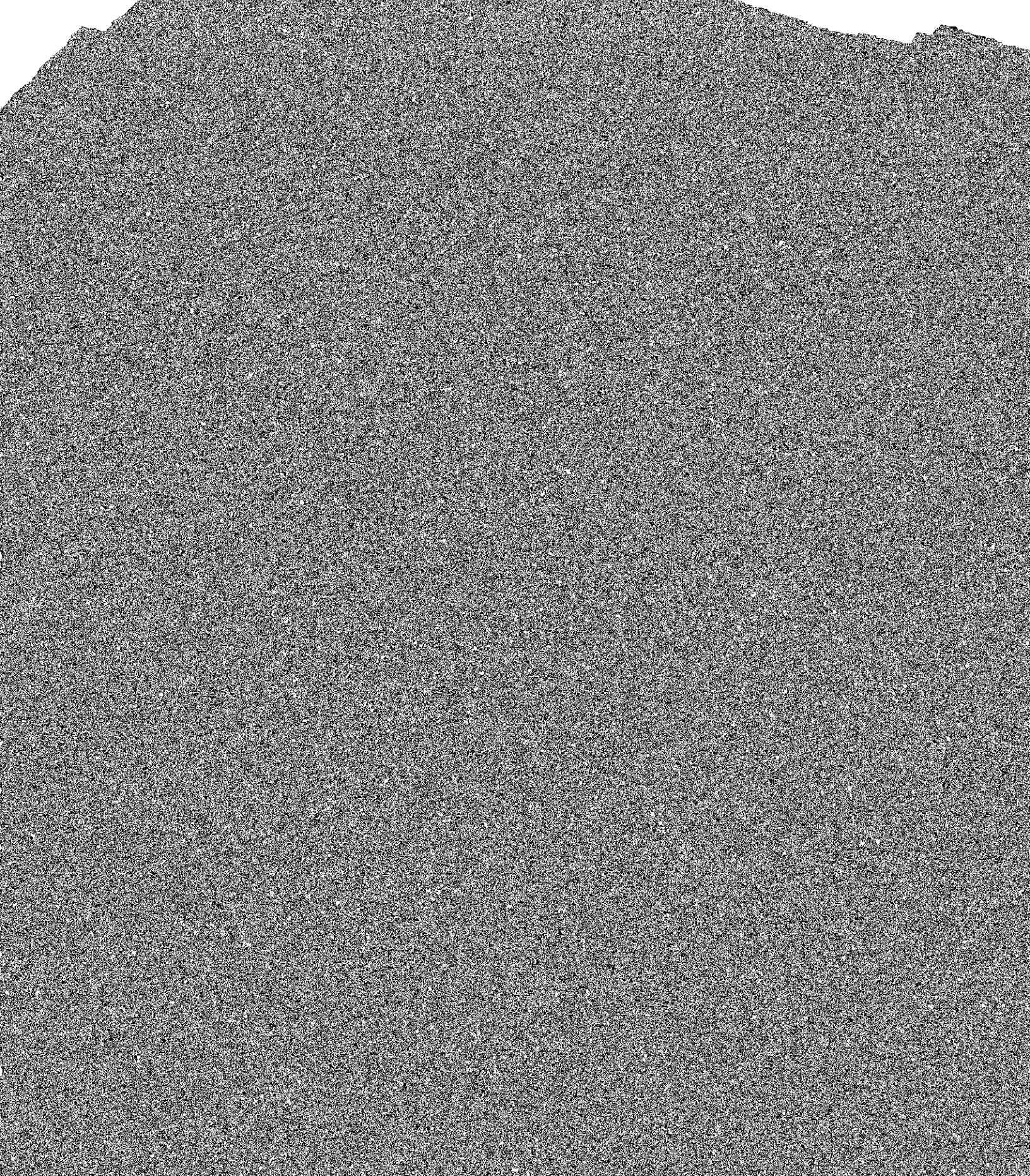


ALL INFORMATION CONTAINED HEREIN IS UNCLASSIFIED



SAULT COLLEGE KEY AREAS OF DIFFERENTIATION

Sault College is focused on serving the Northern Ontario Region with an emphasis on the Sault Ste. Marie and Algoma communities. Sault College contributes to the livelihood of the region and its economic development by providing access to comprehensive, career-oriented education in the areas of applied arts, business, health care, and community services.

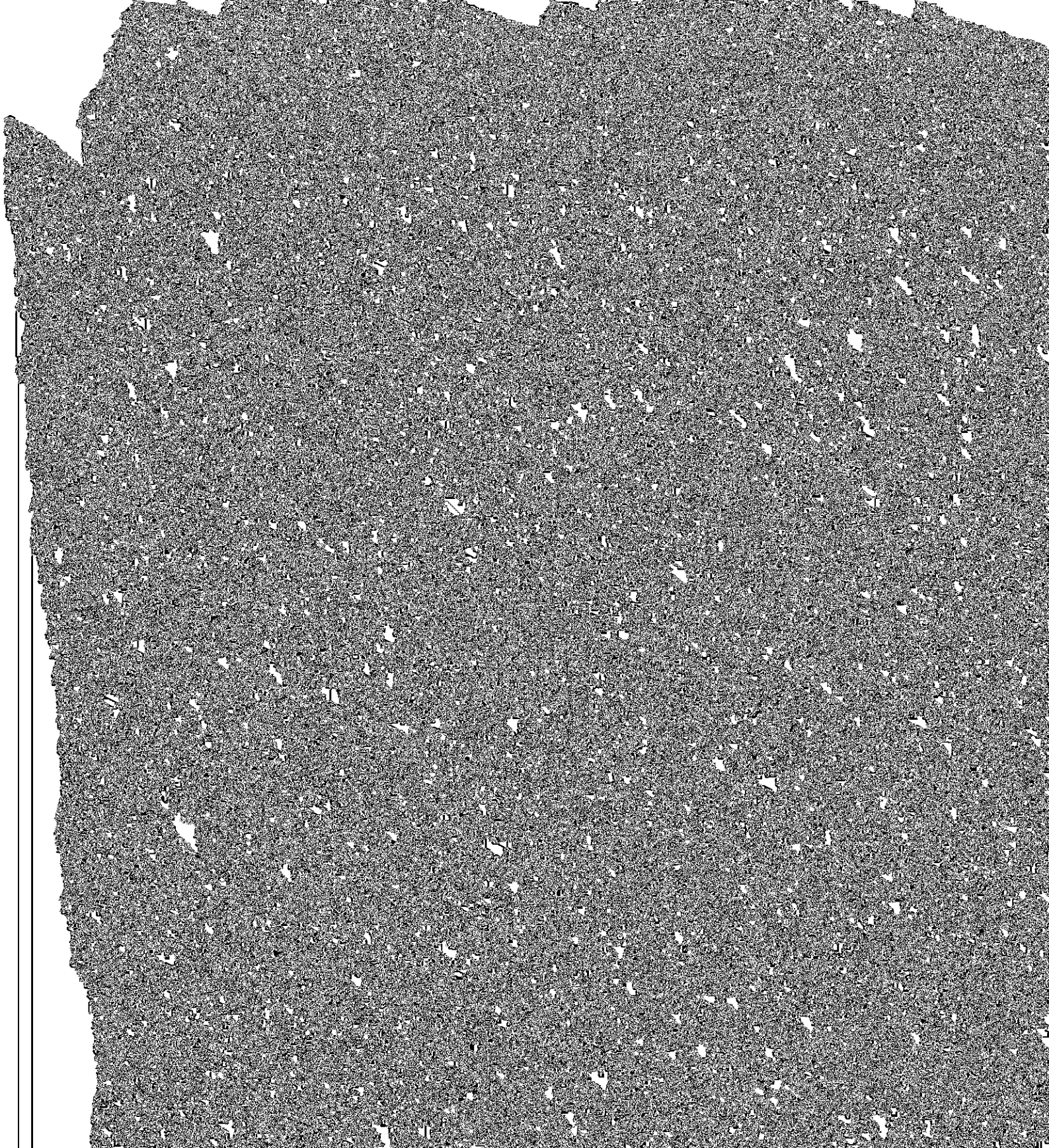
The College provides programming in niche areas, including health, engineering technology, environmental studies, and aviation (pilot training), that respond to labour market needs, and are focused on future technologies and demands.

ALIGNMENT WITH THE DIFFERENTIATION POLICY FRAMEWORK



1.3 Metrics

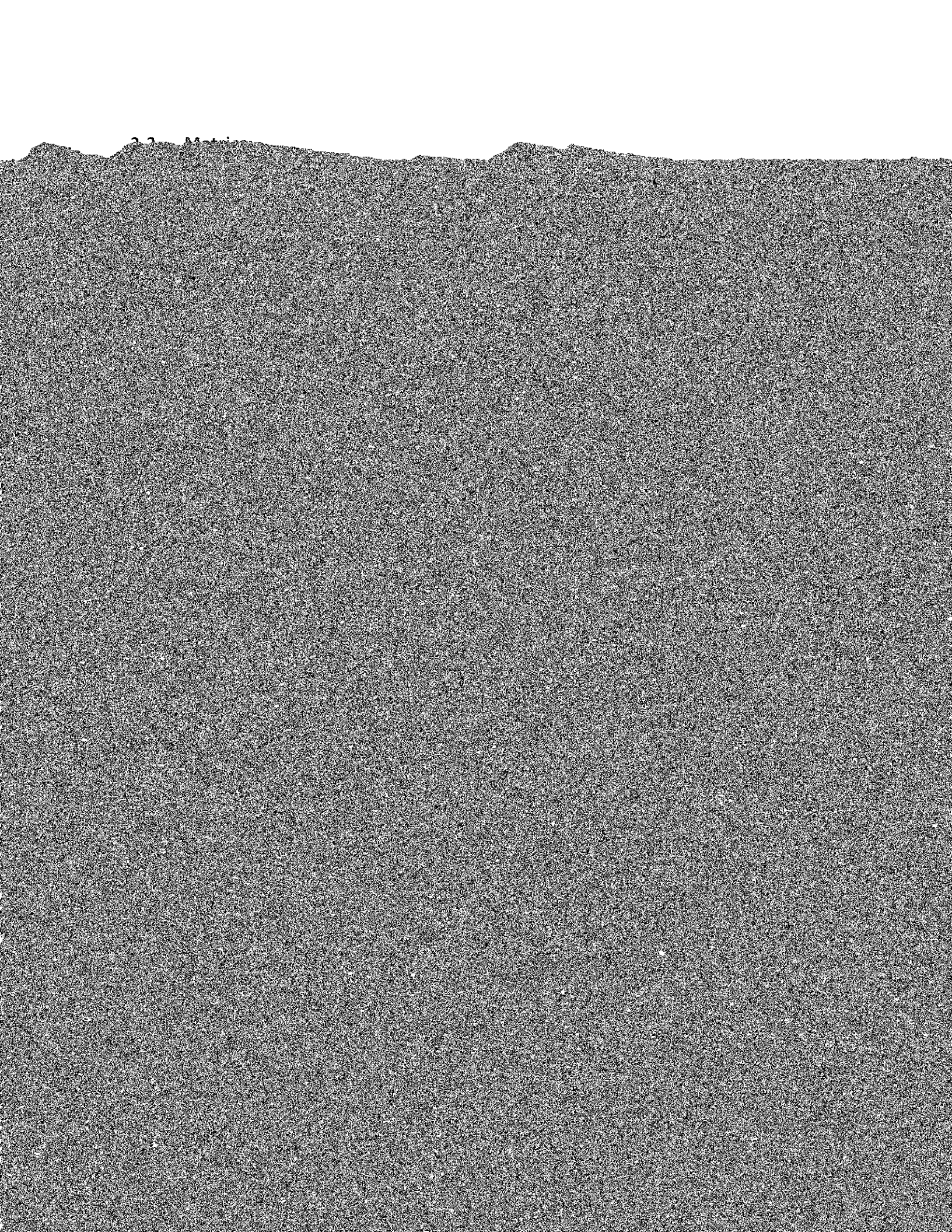
Institutional Metrics	System-Wide Metrics ¹
• Community component in all	• Graduate employment rates



2.2 Additional Comments

- 2012-13 data indicates high student satisfaction with the overall learning experience (86.2%, the highest rate among colleges) and preparedness for future careers (91.1% the second highest among colleges).

3 STUDENT POPULATION



4.2 Additional Comments

- The Ministry notes that the College plans to expand in its areas of strength by 12 new and expanded programs that are generally supported by outcomes and program infrastructure, particularly in the areas of Aerospace, Engineering Technology, and Native Education (Residential Construction and Aboriginal Justice).

INSTITUTIONAL COLLABORATION TO SUPPORT STUDENT MOBILITY

c) Apprenticeship Changes

The college has indicated plans to establish a Centre for Apprenticeship to offer more in-class instruction, and to implement new delivery models as part of its commitment to apprenticeship and the skilled trades. The Ministry is currently undertaking efforts to modernize Ontario's apprenticeship administration and any decisions will be made

